

Client: Norwest Holst

Project: Recovery Facility, Hollingdean

Project Summary

The project comprised the development of a 13,800m² contaminated mixed use site incorporating a cost of £150 per m³ for the disposal of material from site.

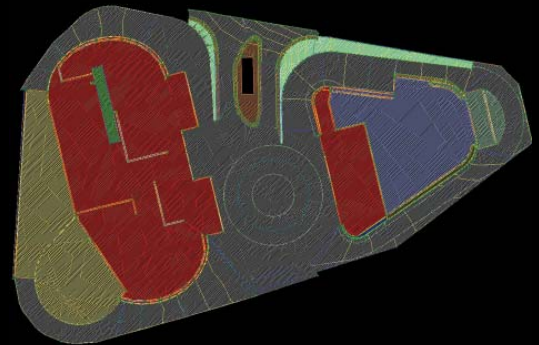
Cubic were initially engaged to verify earthworks quantities to establish our client's risk. A further value engineering exercise was undertaken to rationalise the design.

Cubic Solution

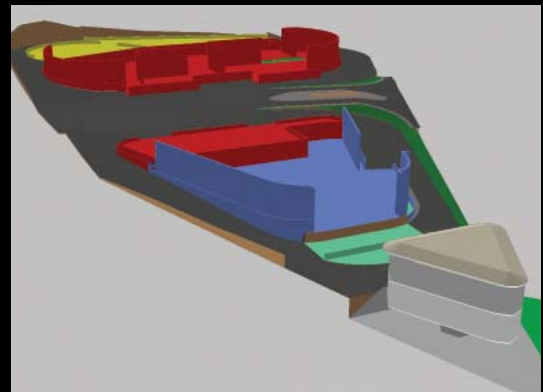
The project took two days to model, check and measure with resultant net quantities, a combination of cut and fill, of 13,697m³ of materials taken off site. In collaboration with our client and the professional team, the resultant value engineering exercise took a further day to complete. The exercise involved adjusting the design levels to provide an optimised solution in balance with collective requirements.

Benefits

Cubic's involvement and analysis resulted in a potential net saving in the earthworks quantities of 3,984m³. Cubic's services went beyond the original brief and provided our client with significant commercial benefits.



Plan of proposed development



Perspective view of development

“
We found Cubic to be proactive and brought benefit to our tender submission.”

Mark Watson,
Norwest Holst