

**Client:** Birse Civils Ltd

**Project:** Neats Court, Sittingbourne

## Project Summary

The 240,000m<sup>2</sup> project incorporated the construction of development plots, 600m of environmental bunding, two balancing ponds and 1200m of single carriageway.

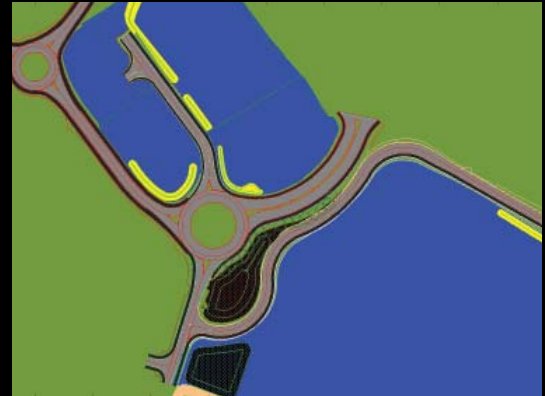
Cubic were engaged to verify earthworks quantities as part of the tender bid process.

## Cubic Solution

The project took three days to model, check and measure with the resultant quantities of 263,013m<sup>3</sup> of varying excavation items and 149,943m<sup>3</sup> of varying fill materials. The quantities were checked directly against the bill of quantities and the proposed earthworks strategy. The process highlighted a significant variant in excess of 50,000m<sup>3</sup> in the bulk excavation to deposition quantities.

## Benefits

Cubic's analysis and final report resulted in amendments to the final bill of quantities. Our client was in a position to then confidently price the project on a lump sum basis.



Extract plan of proposed development



Perspective view of development areas & access roads

“  
*Using Cubic meant we were able to provide our client with an enhanced understanding of the project.*  
”

Peter Cole, Regional Engineering Manager  
Birse Civils Ltd